

**EURO**  
SERIES



**300x600MM**  
**DIGITAL WALL TILES**

# EVERY SINGLE PLACE INSPIRES US TO CREATE NEW LIVING

Inputting scholar manpower at work along with the state of the art technology, has achieved the title to epitome of Ceramic tiles manufacturer. The company intends to serve the best with high quality and accuracy, in result bringing the gratifying innovation to the market. The company's philosophy says that they don't merely manufacture but create art and craft visuals that surpass the general beauty standards.

was pioneered in Morbi with a vision to combine the 5 elements of mother nature; Air, fire, water, earth, space and process them to get a output that has all the qualities of these components. Company intended to modify the nature to develop something so beautiful that elevates your ambience and leaves everyone in awe of the inspiring decor you bring to them.

The state of the art technology coupled with exciting design support, made the company become the leader in wall tiles in India. Internationally, the company has done extremely well in expanding its market base in very short period. Its Distribution channels and excellent brand image make the company a favourite of the distributors across India. The styles and the new introductions are always waited for and cherished.

## Our Mission

We intend to conduct our business in a way that not only meets but exceeds the Expectations of our customers, business partners, distributors, buyers and creditors, as Well as the communities in which we operate and society at large. As a part of our mission we will

- Empower and train our employees to deliver better work outputs.
- We will introduce the designs that become the new trend, benefiting our customers.
- We will make our products easily available and largely affordable to make our distributors and importers profitable.
- We will make all our actions socially and morally responsible



## Our Technologies

The Plant consists a Heavy Capacity Presses, (Made in Italy) Glazed Lines, Roller Kilns (All Made in Italy), Boil Mill Grinding Unit, Spray Dryer Made in China. Raw Material is procured from famous supplier and being brought from Rajasthan and also imported from Ukraine.



## Technology-Certified





## THE RESULT OF A REVOLUTIONARY TECHNOLOGY THAT **ELIMINATES**

IWe bring the revolutionary mechanism to manufacture modern tile collection. The technical know-how we use has the most upgraded version that can create great designs for your decor.

Merely technology can not bring the results we intend to provide. Our exceptional scholars put in their best work in their knowledge to get a output that not only satisfies our customers but make us the leading manufacturer as the best quality providers.

Superior technical characteristics of our wall tiles makes them suitable for use as work tops of all kinds, with a visual appeal that equals and even surpasses that of any other material.

With the help of pressure and temperature we transform 100% natural materials into porcelain surface which combines the best of ceramics design with natural stone resistance.



FROST  
RESISTANCE



CHEMICAL  
RESISTANCE



WATERPROOF



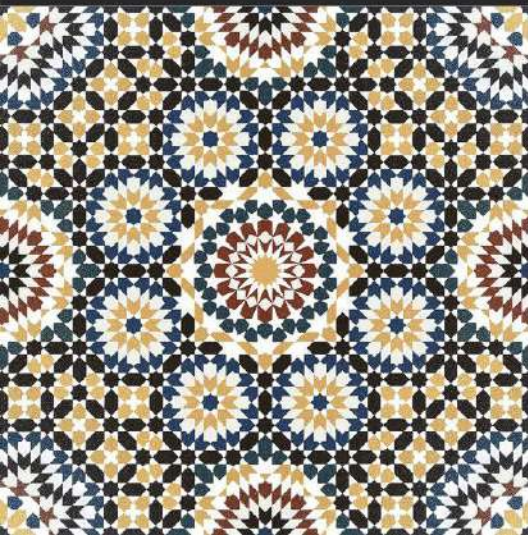
THERMAL  
RESISTANCE



STAIN  
RESISTANCE



FIREPROOF



# GLOSSY

collection

The intriguing decorative textures and surfaces  
the detail of personality that embellishes and  
attracts for the air elegant that gives the space.

**300x  
600MM** **DIGITAL  
WALL TILES**



Resistant to  
Abrasion



Anti  
Slip



Breaking  
Strength



Thermal Shock  
Resistant



Frost  
Resistant



Resistant to  
Staining

**EURO**  
SERIES

**10641**



**LT**



**HL1**



**HL2**



**LT**

**10641**



**LT**



**HL3**



**HL4**



**LT**

**10641**



**LT**



**HL5**



**HL6**



**LT**

**300x  
600MM** **DIGITAL  
WALL TILES**



Resistant to  
Abrasion



Anti  
Slip



Breaking  
Strength



Thermal Shock  
Resistant



Frost  
Resistant



Resistant to  
Staining

**EURO**  
SERIES

**10641**



**LT**



**HL7**



**HL8**



**LT**

**10641**



**LT**



**HL9**



**HL10**

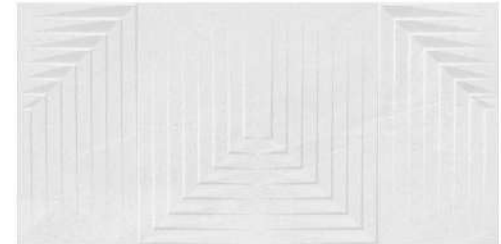


**LT**

**10641**



**LT**



**HL11**



**HL12**



**LT**

**300x  
600MM** **DIGITAL  
WALL TILES**



Resistant to  
Abrasion



Anti  
Slip



Breaking  
Strength



Thermal Shock  
Resistant



Frost  
Resistant



Resistant to  
Staining

**EURO**  
SERIES

**10642**



**LT**



**HL1**



**HL2**



**LT**

**10642**



**LT**



**HL3**



**HL4**



**LT**

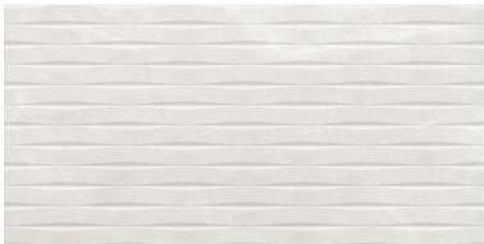
**10642**



**LT**



**HL5**



**HL6**



**LT**

**300x  
600MM** **DIGITAL  
WALL TILES**



Resistant to  
Abrasion



Anti  
Slip



Breaking  
Strength



Thermal Shock  
Resistant



Frost  
Resistant



Resistant to  
Staining

**EURO**  
SERIES

**10642**



**LT**



**HL7**



**HL8**



**LT**

**10642**



**LT**



**HL9**



**HL10**



**LT**

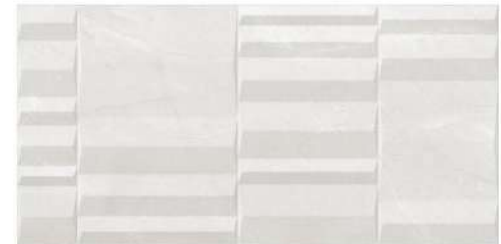
**10642**



**LT**



**HL11**



**HL12**



**LT**

**300x  
600MM** **DIGITAL  
WALL TILES**



Resistant to  
Abrasion



Anti  
Slip



Breaking  
Strength



Thermal Shock  
Resistant



Frost  
Resistant



Resistant to  
Staining

**EURO**  
SERIES

**10643**



**LT**



**HL1**



**HL2**



**LT**

**10643**



**LT**



**HL3**



**HL4**



**LT**

**10643**



**LT**



**HL5**



**HL6**



**LT**

**300x  
600MM** **DIGITAL  
WALL TILES**



Resistant to  
Abrasion



Anti  
Slip



Breaking  
Strength



Thermal Shock  
Resistant



Frost  
Resistant



Resistant to  
Staining

**EURO**  
SERIES

**10643**



**LT**



**HL7**



**HL8**



**LT**

**10643**



**LT**



**HL9**



**HL10**

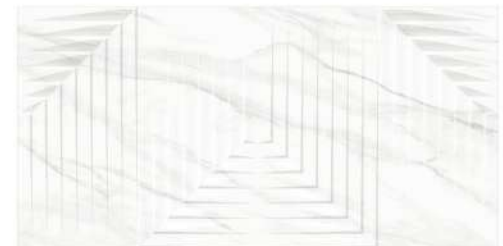


**LT**

**10643**



**LT**



**HL11**



**HL12**



**LT**

**300x  
600MM** **DIGITAL  
WALL TILES**



Resistant to  
Abrasion



Anti  
Slip



Breaking  
Strength



Thermal Shock  
Resistant



Frost  
Resistant



Resistant to  
Staining

**EURO**  
SERIES

**10644**



**LT**



**HL1**

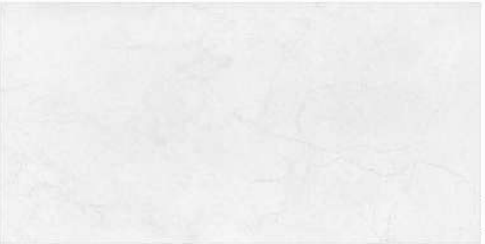


**HL2**

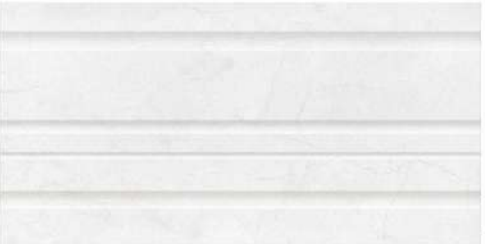


**LT**

**10644**



**LT**



**HL3**



**HL4**



**LT**

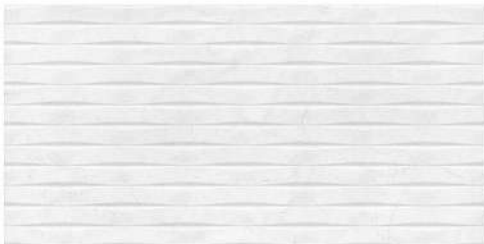
**10644**



**LT**



**HL5**



**HL6**



**LT**

**300x  
600MM** **DIGITAL  
WALL TILES**



Resistant to  
Abrasion



Anti  
Slip



Breaking  
Strength



Thermal Shock  
Resistant



Frost  
Resistant



Resistant to  
Staining

**EURO**  
SERIES

**10644**



**LT**



**HL7**



**HL8**



**LT**

**10644**



**LT**



**HL9**



**HL10**

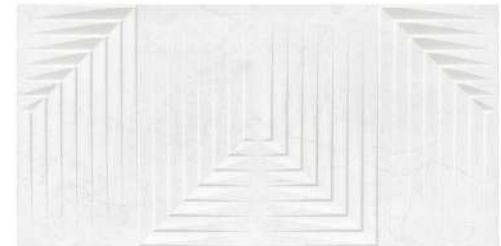


**LT**

**10644**



**LT**



**HL11**



**HL12**



**LT**

**300x  
600MM** **DIGITAL  
WALL TILES**



Resistant to  
Abrasion



Anti  
Slip



Breaking  
Strength



Thermal Shock  
Resistant



Frost  
Resistant



Resistant to  
Staining

**EURO**  
SERIES

**10645**



**LT**



**HL1**



**HL2**



**LT**

**10645**



**LT**



**HL3**



**HL4**



**LT**

**10645**



**LT**



**HL5**



**HL6**



**LT**

**300x  
600MM** **DIGITAL  
WALL TILES**



Resistant to  
Abrasion



Anti  
Slip



Breaking  
Strength



Thermal Shock  
Resistant



Frost  
Resistant



Resistant to  
Staining

**EURO**  
SERIES

**10645**



**LT**



**HL7**



**HL8**



**LT**

**10645**



**LT**



**HL9**



**HL10**



**LT**

**10645**



**LT**



**HL11**



**HL12**



**LT**