

**FULLBODY**  
COLLECTION

600x1200mm | 600x600mm

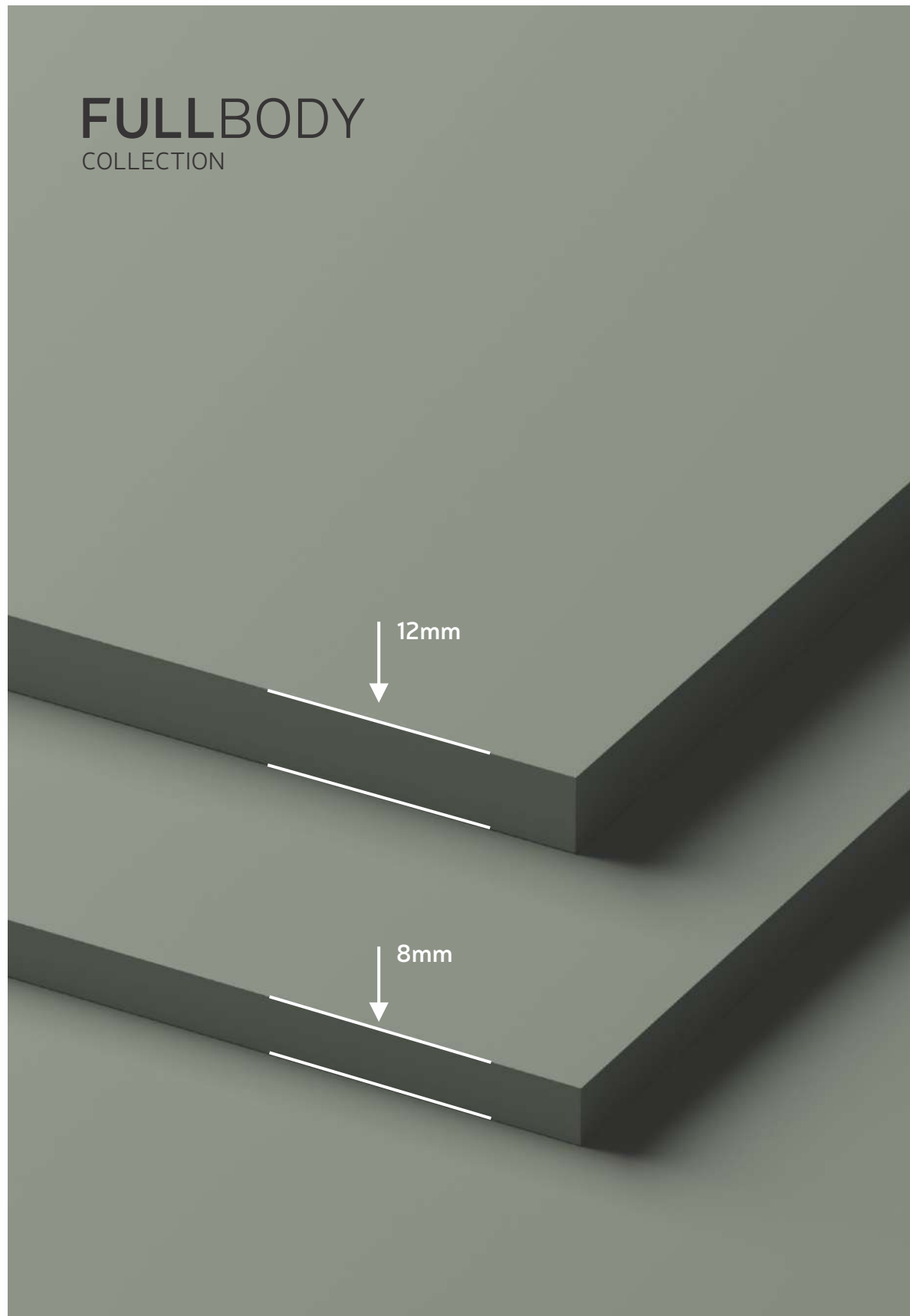
**FULLBODY**  
COLLECTION

**FULL BODY**  
**FULL IMPACT**

Bringing your dream space to life

# FULLBODY

COLLECTION



# AN IDEAL BLEND OF FORM AND FUNCTION

Fit for any and every style and space.

## 02 SIZES

600x600mm | 600x1200mm

## 02 THICKNESSES

8mm | 12mm

## 03 FINISHES

POLISHED | MATT | RUSTIC PUNCH

## 06 COLORS

The Fullbody Collection by us presents a bold new range of colors, designs, and patterns that mark a revolutionary shift in the ceramic industry. Available in two classic sizes, 600x600mm and 600x1200mm, the collection is designed to meet your specific needs. It also features two thickness options, 8mm, and 12mm, offering enhanced strength and long-lasting durability.

The collection comes in 3 finishes, Polished, Matt, and Rustic Punch, each offering a distinct texture and visual appeal to suit diverse design preferences. Exquisitely crafted, these finishes are the epitome of refined craftsmanship and offer the versatility to bring your dream project to life.

# EXPLORE THE EXQUISITE FINISHES

Which brings life to spaces

Our Fullbody Collection features three distinct and thoughtfully curated finishes — Polished, Matt, and Rustic Punch each designed to revamp your spaces with character and sophistication.

Whether you are looking for a tactile experience, a subtle feel, or shiny elegance, our finishes are ready to bring your vision to life. They are designed to complement your everyday routine and still effortlessly provide lasting performance. Upgrade to refined aesthetics with these finishes that are a style statement.



Rustic Punch

Matt

Polished

# A WALKTHROUGH OF THE PROCESS FROM

Raw materials to fullbody tile



## ONLY MINERALS

Our commitment to delivering the highest quality standard begins at the source. We source the finest and purest raw materials and minerals required for production. We prefer fullbody authentic materials over reproduced alternatives. High-grade minerals such as quartz, feldspar, and kaolin are sourced from trusted quarries because of their consistent quality and purity. This approach allows us to deliver superior quality and authenticity in every product.



## MULTICOLOR CHIPS AND GRAINS

Each chip and grain is chosen for its unique color, tone, and composition, allowing us to craft designs that range from subtle to bold expressions. They are sourced exclusively from raw materials and carefully blended to create depth, texture, and visual interest. These elements are selected not just for their natural beauty but because they are an integral part of the process, ensuring that color and pattern remain consistent even with wear and tear while also enhancing structural integrity for lasting durability.



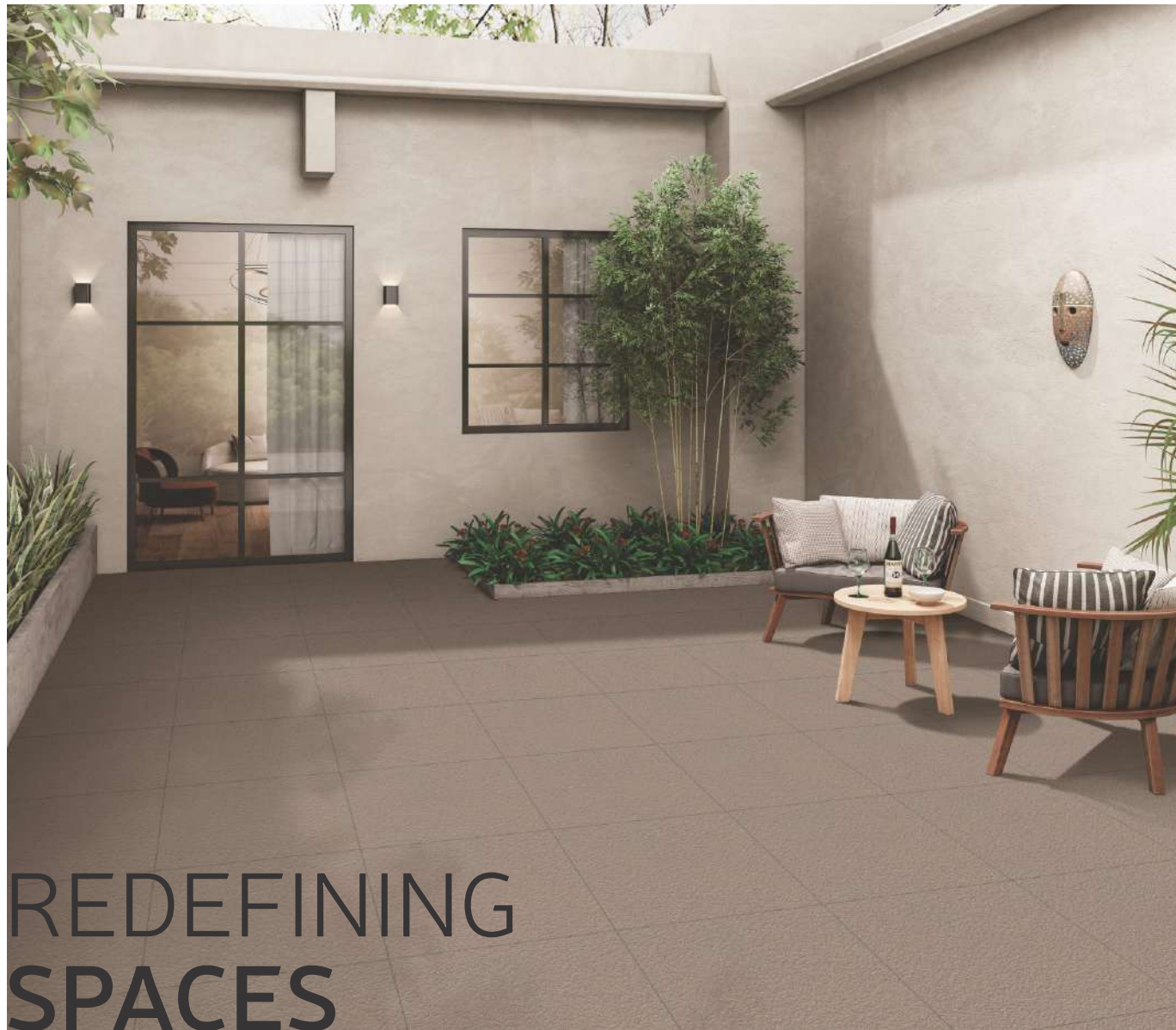
## TRUE RANDOM EFFECT

By incorporating a diverse mix of colors, shapes, and sizes, we deliver a naturally random effect that brings life to each tile. No two tiles are designed to be the same, and this intentional irregularity ensures that every tile is unique, dynamic, and reminiscent of natural stone. The scattered pattern enhances the depth and induces character while offering visual appeal.



## HIGHEST PRESSURE AND FIRE.

Our fullbody tiles are crafted using state-of-the-art machineries like SACMI, which applies the highest level of compaction pressure to ensure structural integrity and unmatched strength. They are compacted at extreme temperatures and baked at high temperatures, which strengthens the base and vitrifies the surface to lock in texture and color. This advanced pressing technology allows the raw materials to blend smoothly and uniformly to form a solid, durable body.



# REDEFINING SPACES

with aesthetics & functionality

Stay worry-free with our collection, designed to deliver unmatched style and long-lasting performance. Resistant to all weather extremes, these tiles keep both your indoor and outdoor spaces strong, stunning, and low-maintenance, year after year. Built to endure the harshest conditions, they offer exceptional performance because of their durable construction. The fullbody composition guarantees a lasting impression without compromising on elegance.

# SERVING MORE THAN JUST LOOKS

Engineered excellence with **built-in benefits**



## SAFE

Be at ease after installing our tiles because they are safe and made from non-toxic materials, which promotes a healthy living environment.



## HYGIENIC

Designed for modern living, our tiles promote a hygienic environment to maintain a healthier, germ-free space for your family.



## EASY TO CLEAN

These tiles are incredibly easy to clean and require minimum upkeep, saving time and effort.



## FIRE RESISTANT

Engineered for safety, these tiles provide an extra layer of protection against fire.



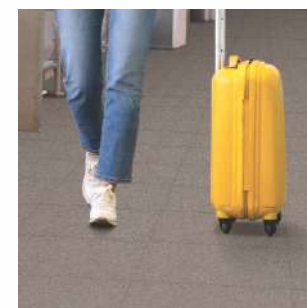
## RESISTANT

They bear high resistance to chemicals and acids and retain their look and integrity over time.



## VERSATILE

Whether for residential or commercial purposes, these tiles effortlessly adapt to any setting or style.



## ANTI-SLIP

Stay safe with our anti-slip tiles, as they are designed to reduce the risk of slips and falls, even in wet areas.

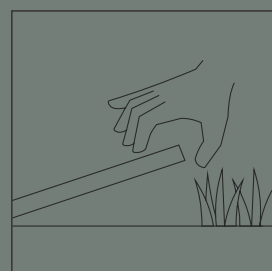


## ENVIRONMENT-FRIENDLY

Made from sustainable materials, they are eco-friendly and support a healthy planet life.

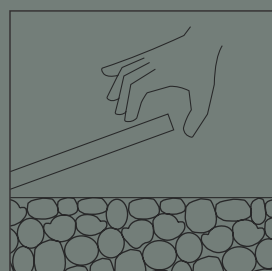
# INSTALLATION GUIDE

For 12mm



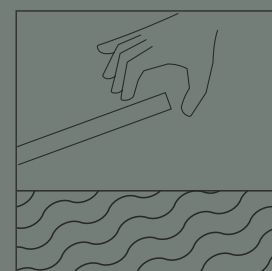
## Installation On Grass

It is a stylish and functional way to enhance your outdoor spaces, such as gardens, pathways, or patios. Tiles are placed directly onto leveled grass using spacers to maintain proper alignment. This setup not only adds aesthetic value to your outdoors but also ensures safety and long-lasting durability.



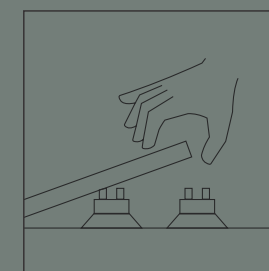
## Installation On Gravel Or Sand

Installing tiles on a gravel or sand base is a practical and durable solution for outdoor areas like walkways or garden pathways. This method helps prevent water accumulation beneath the tiles and also provide excellent drainage. This ensures a stable foundation and enhance visual appeal.



## Installation By Gluing on Cement-based Substrate

This is a reliable and widely used method for both indoor and outdoor tile installation. The cement-based substrate provides a smooth, level base, while the tile adhesive ensures a strong and lasting bond between the tile and the surface. It enhances the durability and stability of the installation, reduces the risk of cracks over time, and delivers a flawless finish.



## Installation on Elevated Structures

This type of installation requires proper planning and execution to ensure safety, durability, and effective drainage. When installing tiles on terraces or balconies, it is important to use specialized systems such as pedestals or waterproof membranes, along with strong adhesives. Proper slope design is essential to prevent water stagnation and to maintain robust structural integrity.

Tile laying comes in different forms, each suited to specific surfaces, environments, and design goals. Whether it's dry laying on grass or gravel for outdoor spaces or adhesive fixing for indoor areas, each technique serves a unique purpose. Choosing the right installation method ensures a flawless finish along with long-lasting performance, safety, and durability.

# SHADES OF INSPIRATION

Where every hue tells a **story of elegance**

Pick your palette from a range of passionately curated shades, thoughtfully selected to meet the diverse needs of our customers. Whether you're drawn to bold tones or prefer something more subtle, each color is designed to reflect you and your unique personality.

Along with a wide range of color choices, these tiles offer exceptional versatility in application. Whether you're designing a home, façade, commercial space, or urban environment, these tiles adapt seamlessly to your vision.

## APPLICATION AREAS



Residential Areas



Urban Areas



Terrace & Patios



Commercial Areas



Swimming Pools



Gardens



High Traffic Areas

# COLOR PALETTE GUIDE

for every style

## 600x600mm (8mm Thickness)

Light Color



Semi Light Color



Dark Color



Plain Color



## 600x600mm (12mm Thickness)

Light Color



Dark Color



## 600x1200mm (8mm Thickness)

Light Color



Semi Light Color



Dark Color



Plain Color



# TILE LAYING PROCESS

For **efficient** and **easy** installation, follow these **instructions**.

Tile laying plays a significant role in the appearance and performance of any space. To enhance aesthetics and ensure durability, safety, and long-term stability, it's essential to follow a proper installation process using the right materials and tools. Follow these steps and step into the space of your dreams.



## 1. PREPARE THE FLOOR

Clean the surface on which the tiles are to be laid thoroughly. The floor should be free from dust or debris.



## 5. SPACERS

After laying the tiles, insert desired spacers to ensure uniform joint spacing.



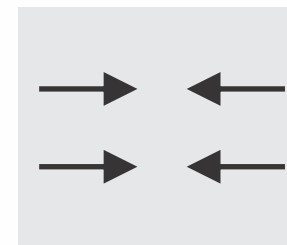
## 2. CEMENT & ADHESIVES

Now, with a notched trowel, spread evenly the tile adhesive for a flat floor. A professional notched trowel is recommended for an even surface.



## 6. AIR GAPS

Ensure there are no air gaps beneath the tile during installation. This is necessary to prevent hollow spots and ensure long-lasting durability and performance.



## 3. LAYING DIRECTIONS

Check the direction of the tile before installation. Ensure the tiles are laid in the prescribed orientation, either left or right, as indicated.



## 7. GROUTING

Remove the spacers and fill the joints with grout using a rubber float, pressing it firmly into the gaps.



## 4. START TILE LAYING

Thereafter, gently lay the tiles onto the adhesive in the desired direction. Use premium adhesive for lasting adhesion.



## 8. CLEANING

Wipe off any excess grout with a damp sponge before it dries and allow the adhesive to cure as per the manufacturer's instructions, typically 24 hours.

—  
Rock  
Crema  
600x600mm



Dusky S&P Crema  
600x1200mm



# S&P Crema

AVAILABLE SIZES  
600x1200mm | 600x600mm

AVAILABLE FINISHES  
Polished, Matt, Rustic Punch

Rock Crema



Rustic Punch 8mm

Dusky S&P Crema



Matt 8mm

Dusky S&P Crema



Polished 8mm

Dusky S&P Crema



Matt 8mm

Hammer S&P Crema



Matt 12mm

Stone S&P Crema



Matt 12mm

APPLICABLE ON  
WALL / FLOOR

Minimum  
4mm Spacer  
Recommended

---

Dusky  
**S&P Beige**  
600x1200mm



Dusky S&P Beige  
600x600mm



# S&P Beige

AVAILABLE SIZES  
600x1200mm | 600x600mm

AVAILABLE FINISHES  
Polished, Matt, Rustic Punch

Rock Beige



Rustic Punch 8mm

Dusky S&P Beige



Matt 8mm

Dusky S&P Beige



Polished 8mm

Dusky S&P Beige



Matt 8mm

Hammer S&P Beige



Matt 12mm

Stone S&P Beige



Matt 12mm

APPLICABLE ON  
WALL / FLOOR

Minimum  
4mm Spacer  
Recommended

---

Dusky  
**S&P White**  
600x1200mm



Dusky S&P White  
600x600mm



# S&P White

AVAILABLE SIZES  
600x1200mm | 600x600mm

AVAILABLE FINISHES  
Polished, Matt, Rustic Punch

Rock White



Rustic Punch 8mm

Dusky S&P White



Matt 8mm

Dusky S&P White



Polished 8mm

Dusky S&P White



Matt 8mm

Hammer S&P White



Matt 12mm

Stone S&P White



Matt 12mm

Dusky S&P White



Polished 8mm

APPLICABLE ON  
WALL / FLOOR

Minimum  
4mm Spacer  
Recommended

—  
Rock  
**Crystal**  
600x600mm



Dusky Crystal  
600x600mm



# Crystal

AVAILABLE SIZE  
600x600mm

AVAILABLE FINISHES  
Polished, Matt, Rustic Punch

Rock Crystal



Rustic Punch 8mm

Dusky Crystal




Matt 8mm

Dusky Crystal



Polished 8mm

APPLICABLE ON  
WALL / FLOOR

  
Minimum  
4mm Spacer  
Recommended

---

Stone  
**S&P Orange**  
600x600mm



Dusky S&P Orange  
600x1200mm



# S&P Orange

AVAILABLE SIZES  
600x1200mm | 600x600mm

AVAILABLE FINISHES  
Matt, Rustic Punch

Rock Orange



Rustic Punch

8mm

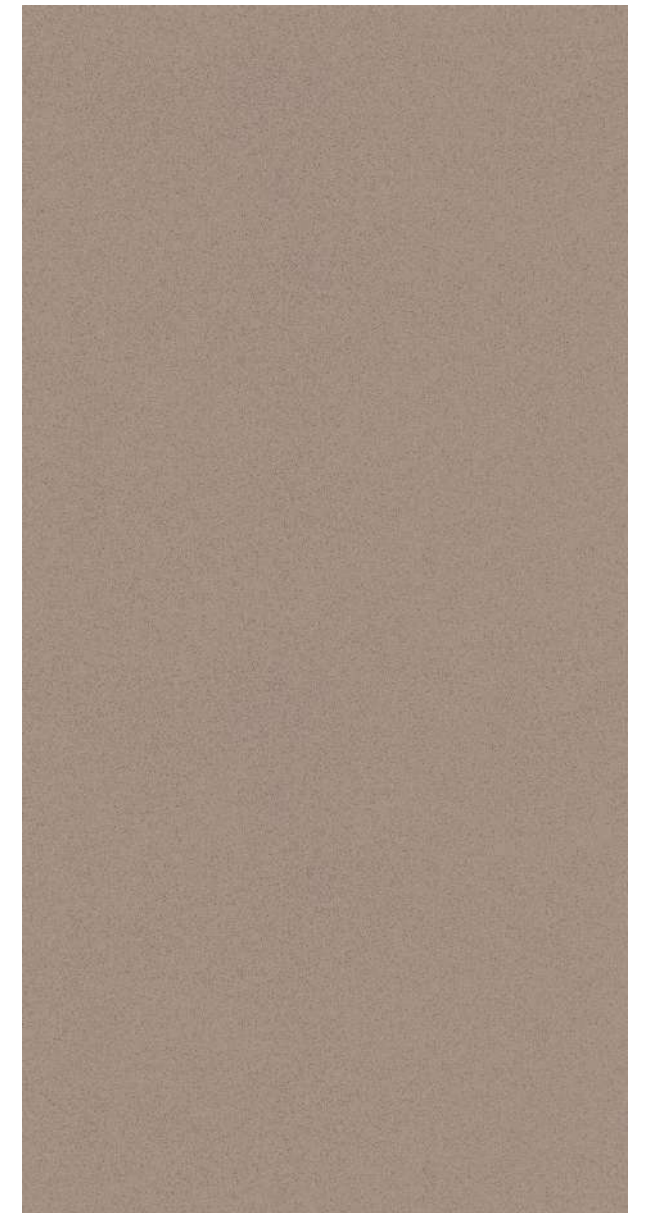
Dusky S&P Orange



Matt

8mm

Dusky S&P Orange



Matt

8mm

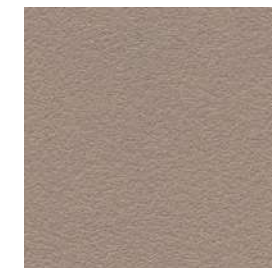
Hammer S&P Orange



Matt

12mm

Stone S&P Orange



Matt

12mm

APPLICABLE ON  
WALL / FLOOR

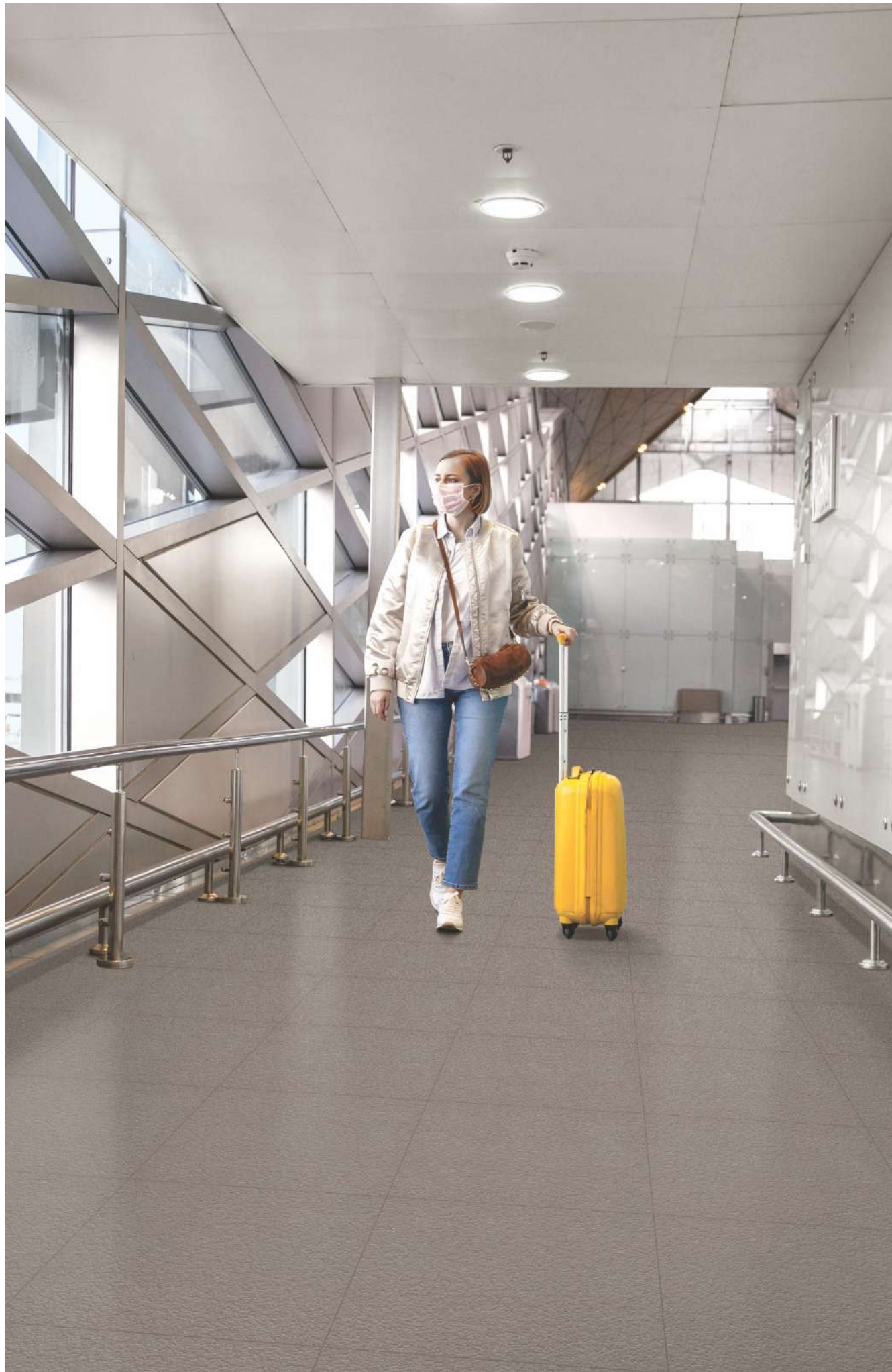
  
Minimum  
4mm Spacer  
Recommended

---

Dusky  
**S&P Earth**  
600x1200mm



Stone S&P Earth  
600x600mm

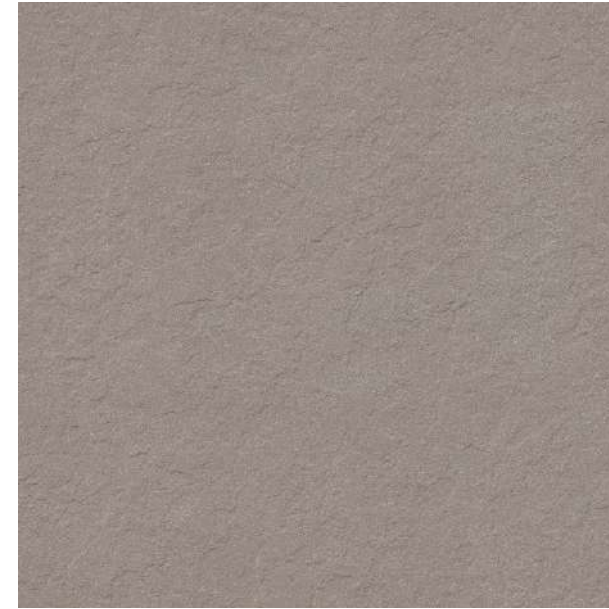


# S&P Earth

AVAILABLE SIZES  
600x1200mm | 600x600mm

AVAILABLE FINISHES  
Matt, Rustic Punch

Rock Earth



Rustic Punch

8mm

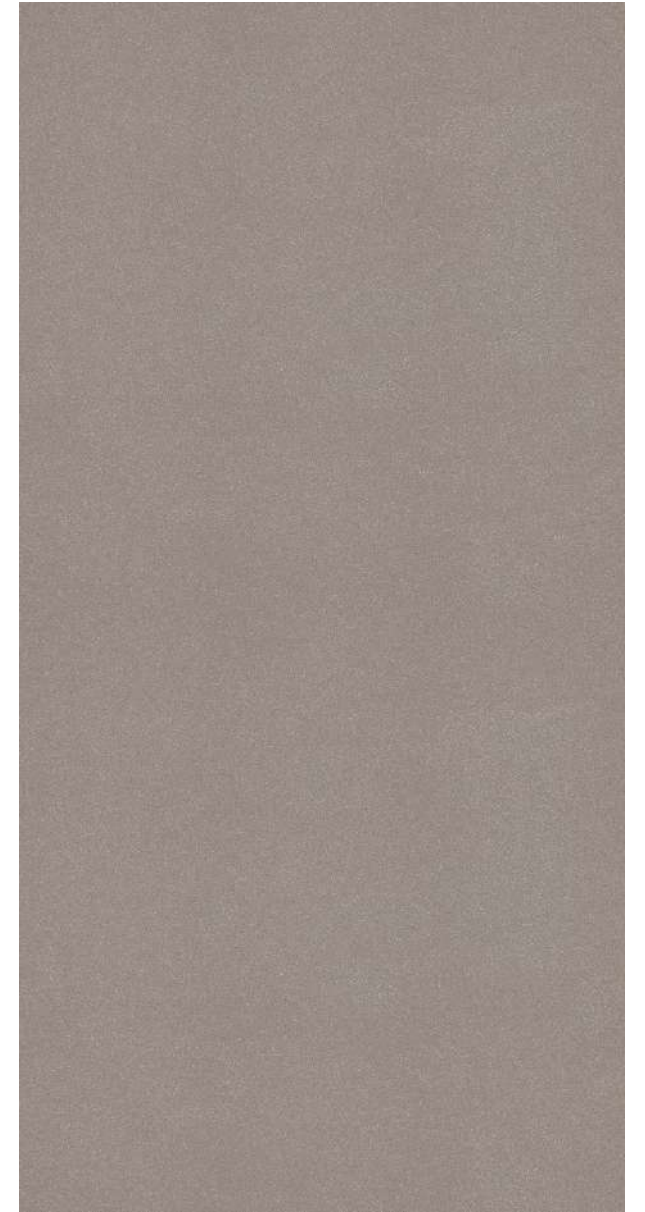
Dusky S&P Earth



Matt

8mm

Dusky S&P Earth



Matt

8mm

Hammer S&P Earth



Matt

12mm

Stone S&P Earth



Matt

12mm

APPLICABLE ON  
WALL / FLOOR

  
Minimum  
4mm Spacer  
Recommended

---

Stone  
**S&P Grey**  
600x600mm



Dusky S&P Grey  
600x1200mm

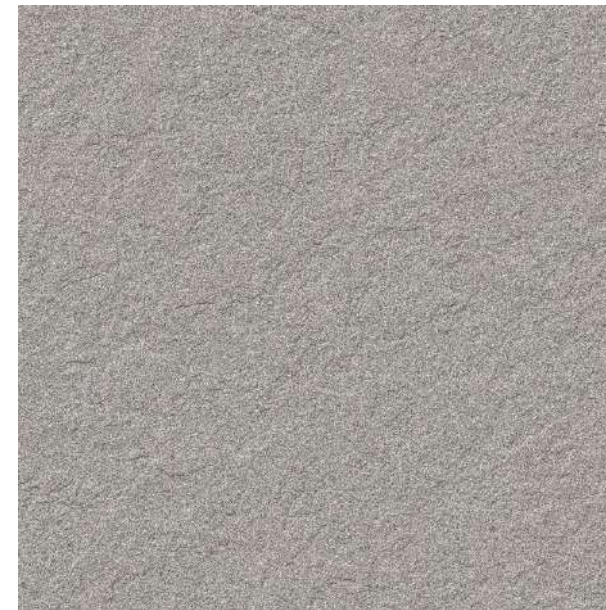


# S&P Grey

AVAILABLE SIZES  
600x1200mm | 600x600mm

AVAILABLE FINISHES  
Polished, Matt, Rustic Punch

Rock Grey



Rustic Punch

8mm

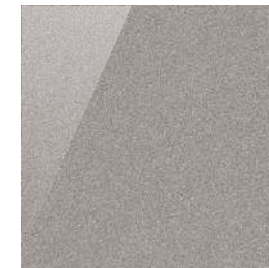
Dusky S&P Grey



Matt

8mm

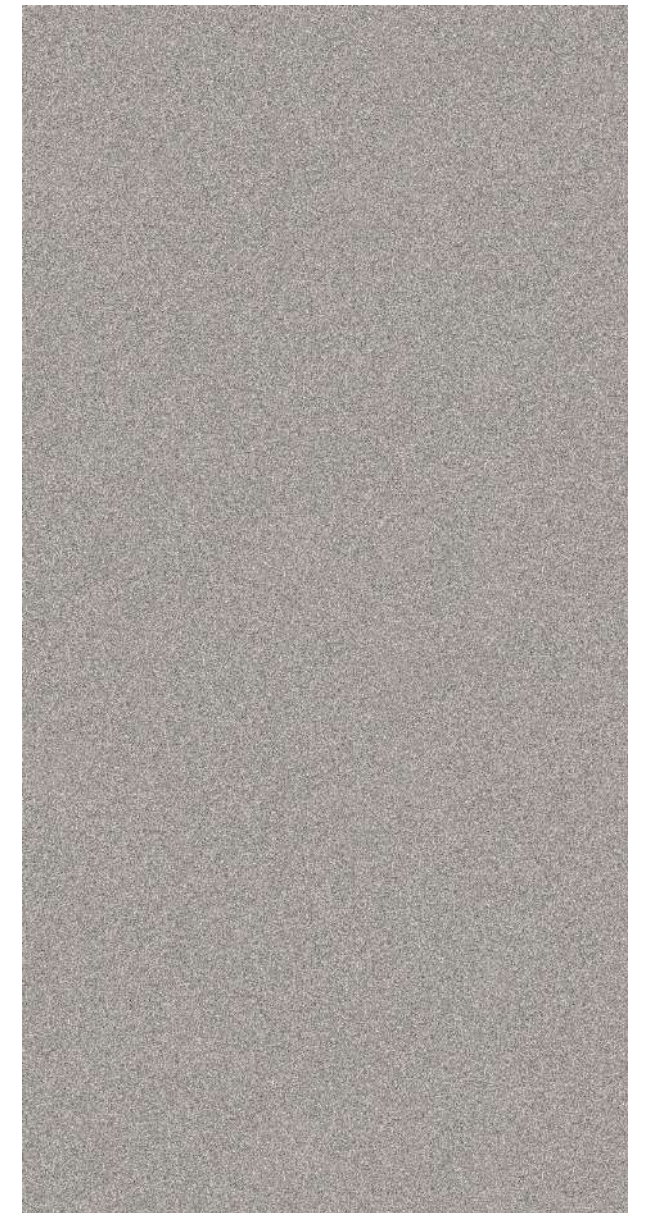
Dusky S&P Grey



Polished

8mm

Dusky S&P Grey



Matt

8mm

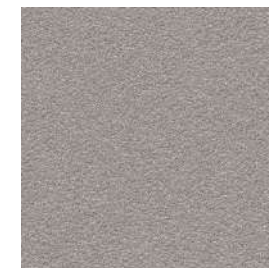
Hammer S&P Grey



Matt

12mm

Stone S&P Grey



Matt

12mm

APPLICABLE ON  
WALL / FLOOR

  
Minimum  
4mm Spacer  
Recommended

---

Dusky  
**S&P Black**  
600x1200mm



Stone S&P Black  
600x600mm

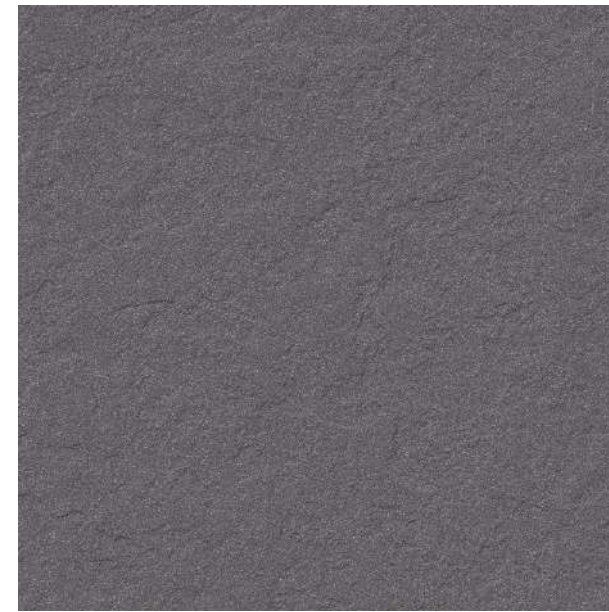


# S&P Black

AVAILABLE SIZES  
600x1200mm | 600x600mm

AVAILABLE FINISHES  
Matt, Rustic Punch

Rock Black



Rustic Punch

8mm

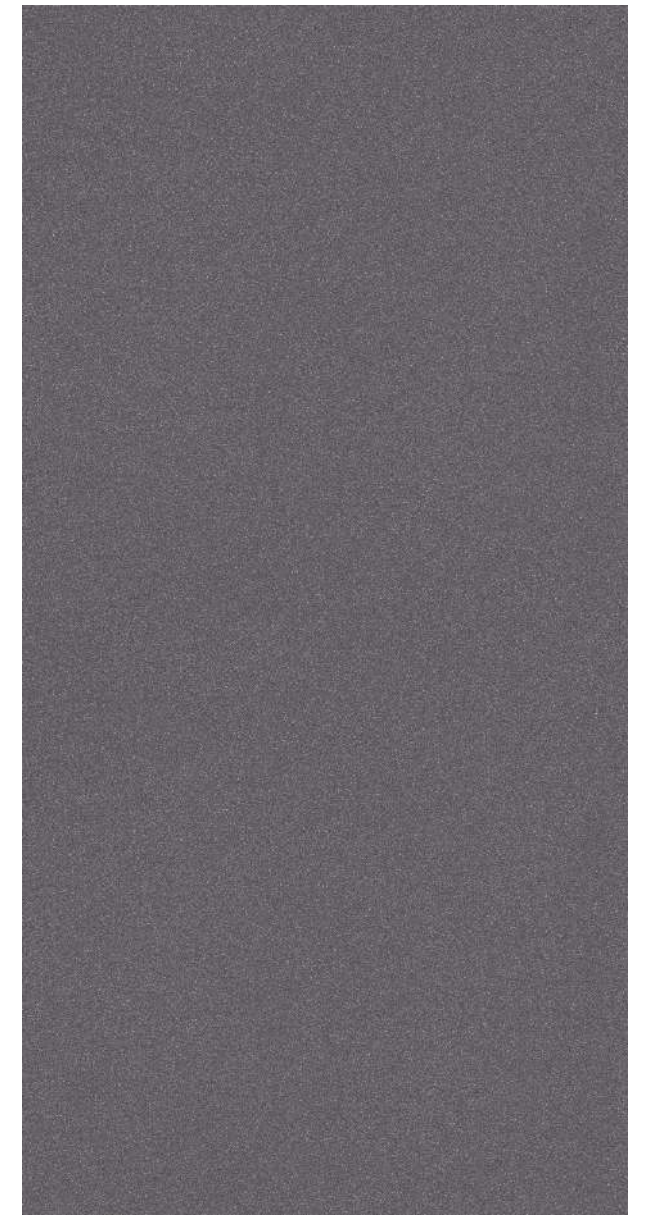
Dusky S&P Black



Matt

8mm

Dusky S&P Black



Matt

8mm

Hammer S&P Black



Matt

12mm

Stone S&P Black



Matt

12mm

APPLICABLE ON  
WALL / FLOOR

  
Minimum  
4mm Spacer  
Recommended

---

Stone  
**S&P Kota**  
600x600mm



Dusky S&P Kota  
600x1200mm

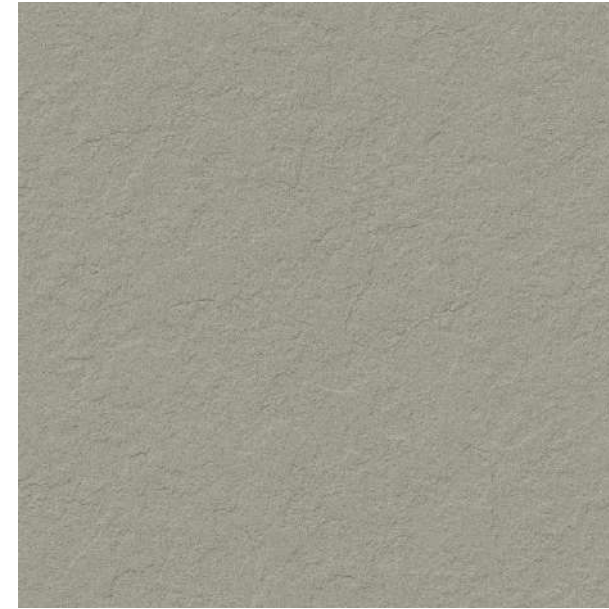


# S&P Kota

AVAILABLE SIZES  
600x1200mm | 600x600mm

AVAILABLE FINISHES  
Matt, Rustic Punch

Rock Kota



Rustic Punch

8mm

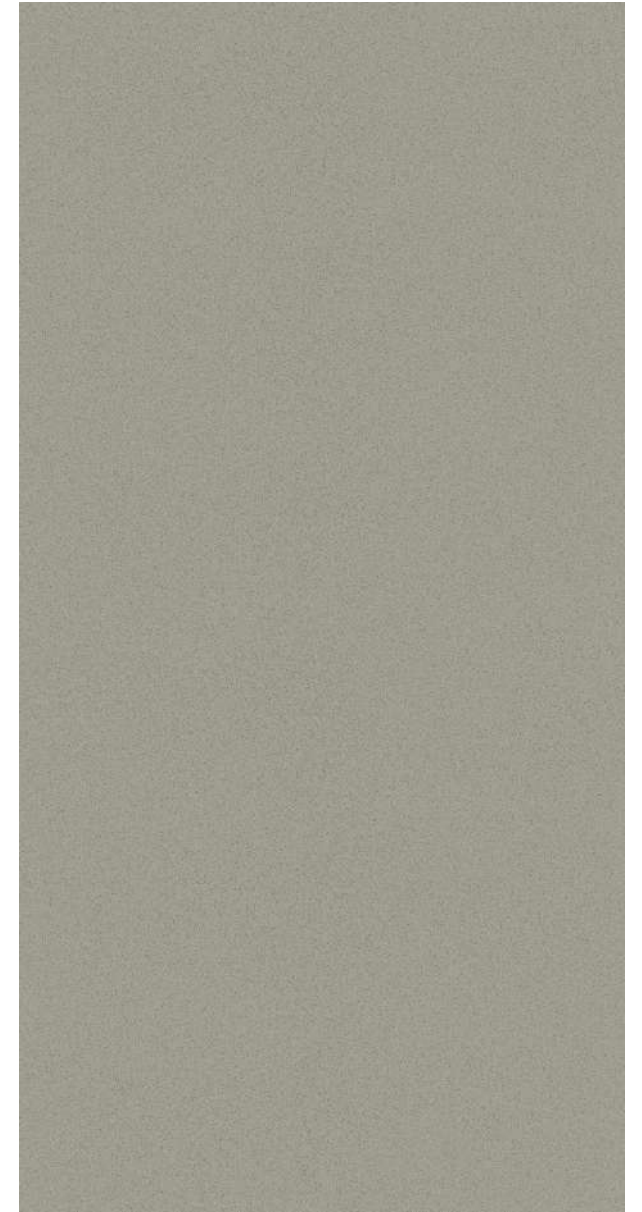
Dusky S&P Kota



Matt

8mm

Dusky S&P Kota



Matt

8mm

Hammer S&P Kota



Matt

12mm


Stone S&P Kota



Matt

12mm

APPLICABLE ON  
WALL / FLOOR

  
Minimum  
4mm Spacer  
Recommended

---

**Mint**  
600x1200mm



Mint  
600x600mm



# Mint

AVAILABLE SIZES  
600x1200mm | 600x600mm

AVAILABLE FINISHES  
Polished, Matt, Rustic Punch

Rock Mint



Rustic Punch

8mm

Mint



Matt

8mm

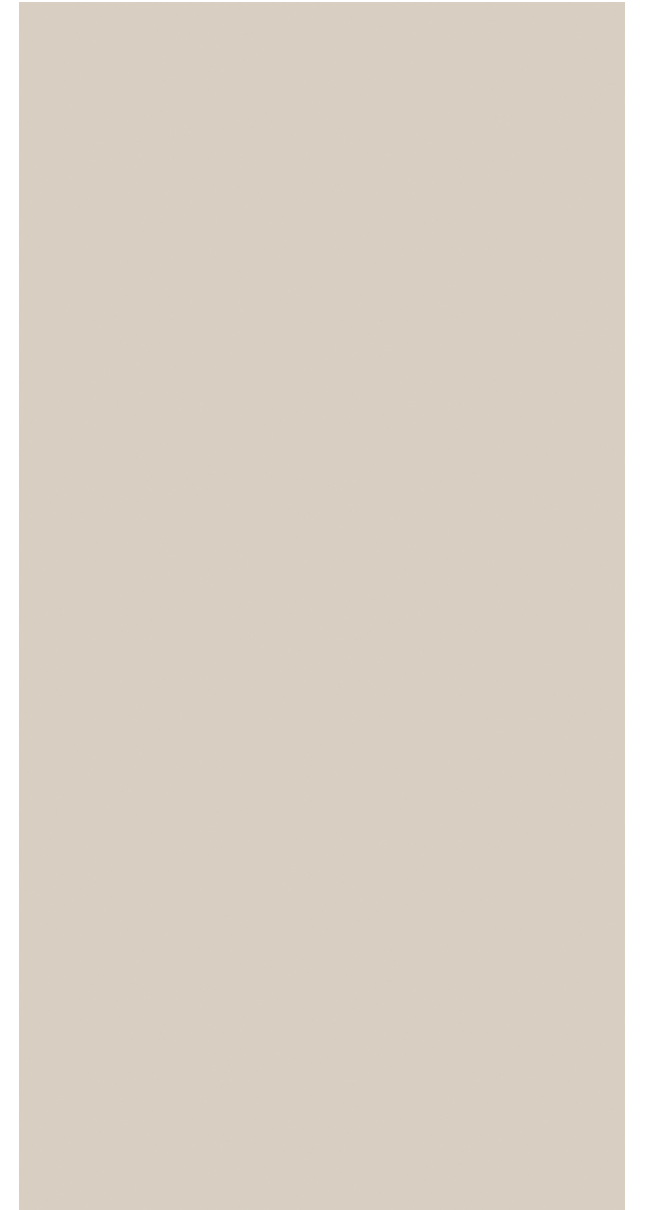
Mint



Polished

8mm

Mint



Matt

8mm

Mint



Polished

8mm

APPLICABLE ON  
WALL / FLOOR

Minimum  
4mm Spacer  
Recommended

---

Rock  
**Domino**  
600x600mm



Domino  
600x1200mm



# Domino

AVAILABLE SIZES  
600x1200mm | 600x600mm

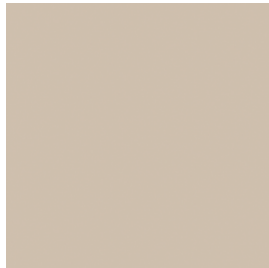
AVAILABLE FINISHES  
Matt, Rustic Punch

Rock Domino



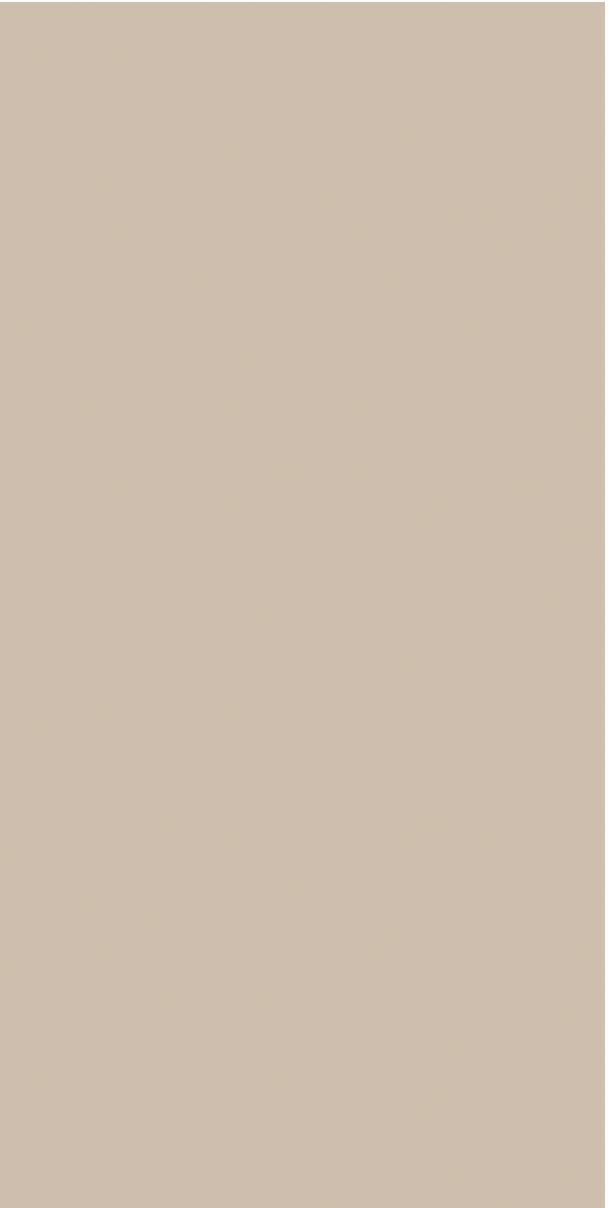
Rustic Punch 8mm

Domino




Matt 8mm

Domino



Matt 8mm

APPLICABLE ON  
WALL / FLOOR

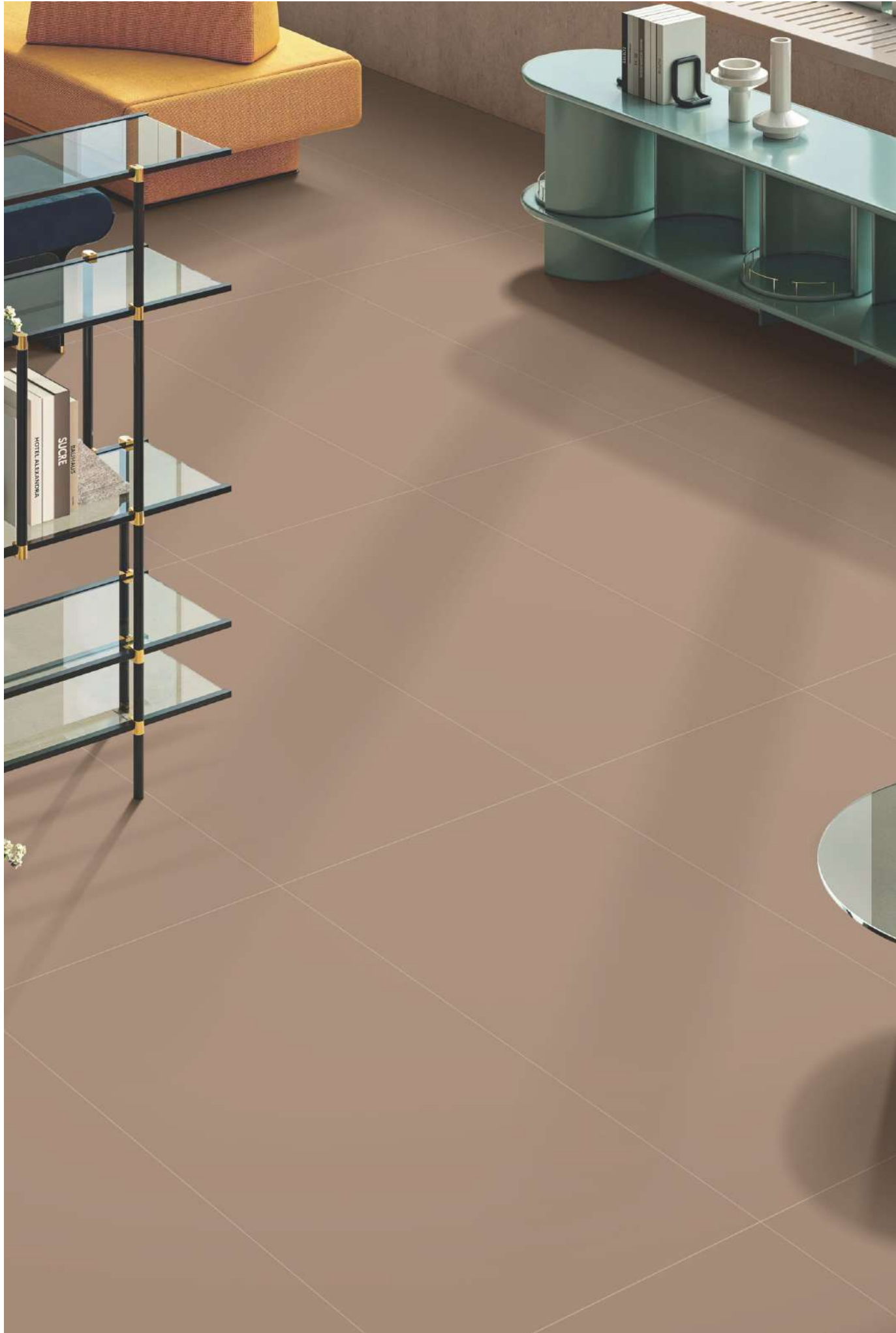
  
Minimum  
4mm Spacer  
Recommended



---

Rock  
**Pastel Orange**  
600x600mm

Pastel Orange  
600x1200mm



# Pastel Orange

AVAILABLE SIZES  
600x1200mm | 600x600mm

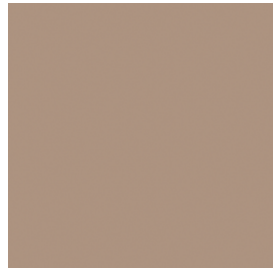
AVAILABLE FINISHES  
Matt, Rustic Punch

Rock Pastel Orange



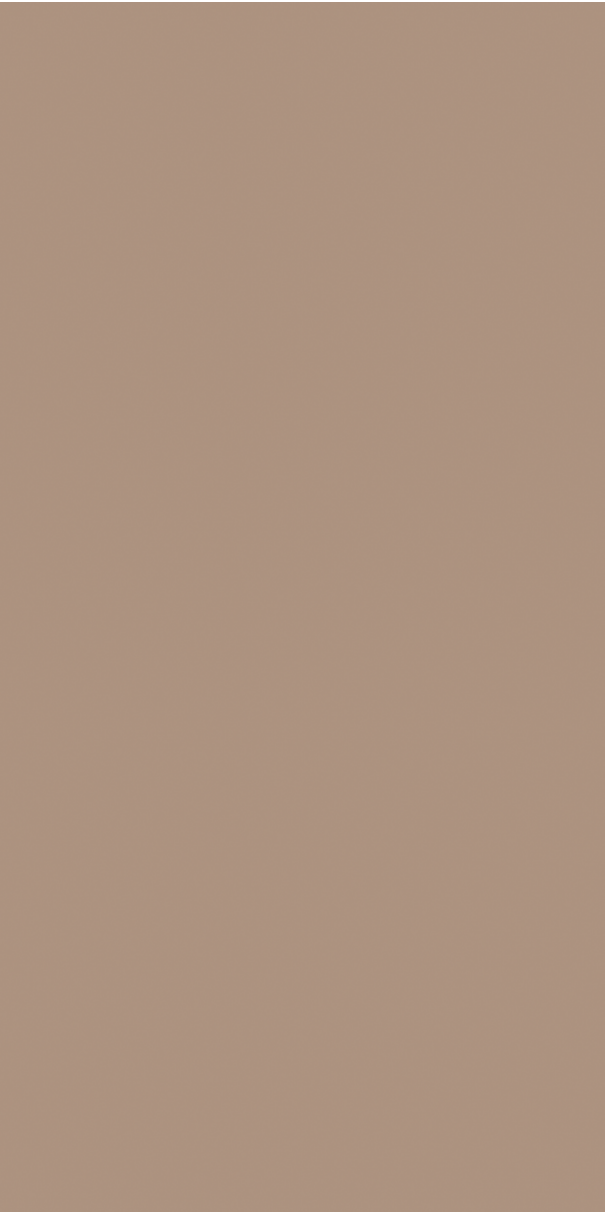
Rustic Punch 8mm

Pastel Orange




Matt 8mm

Pastel Orange



Matt 8mm

APPLICABLE ON  
WALL / FLOOR

  
Minimum  
4mm Spacer  
Recommended

---

# Mushroom & Mint

600x1200mm



Rock Mushroom  
600x600mm

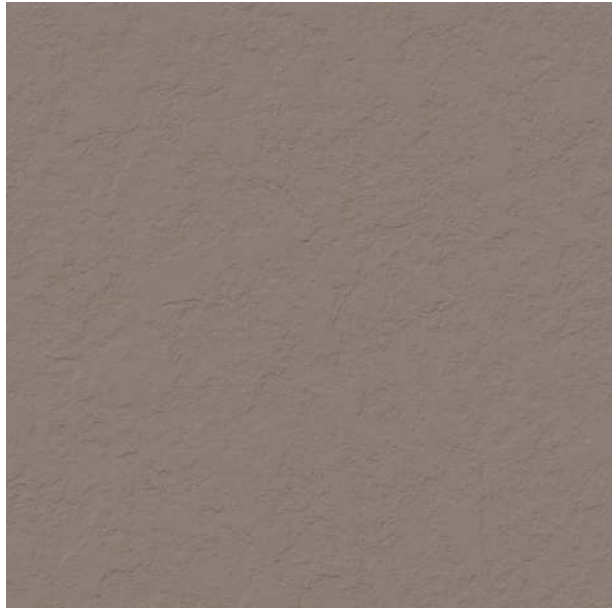


# Mushroom

AVAILABLE SIZES  
600x1200mm | 600x600mm

AVAILABLE FINISHES  
Matt, Rustic Punch

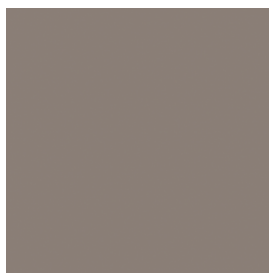
Rock Mushroom



Rustic Punch

8mm

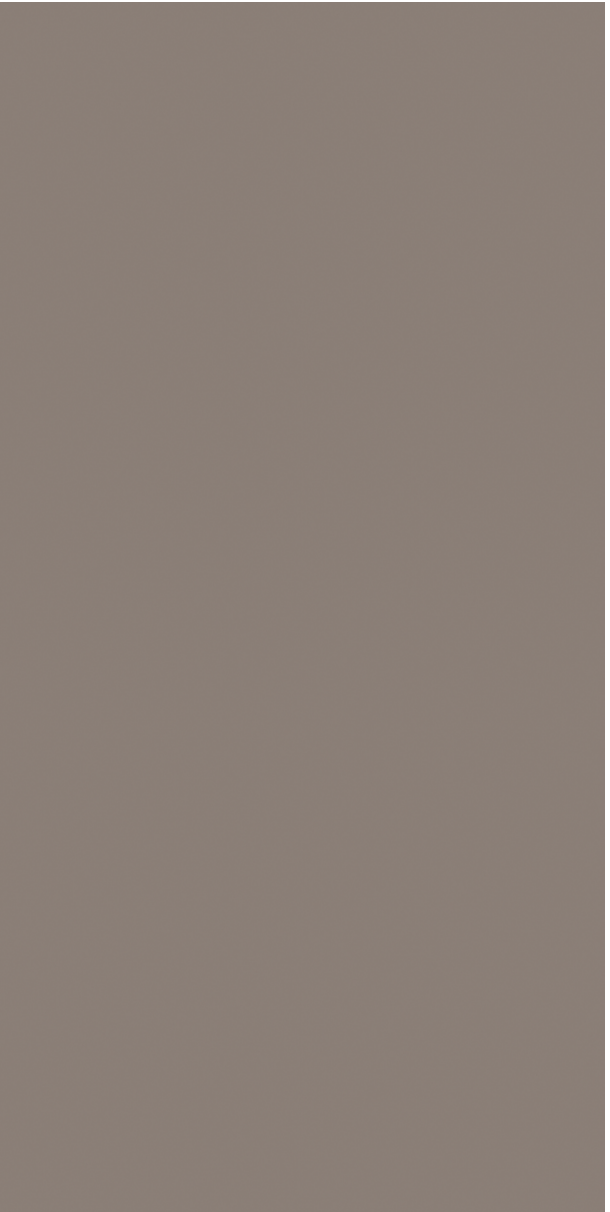
Mushroom



Matt

8mm

Mushroom



Matt

8mm

APPLICABLE ON  
WALL / FLOOR

  
Minimum  
4mm Spacer  
Recommended



---

**Dove**  
600x1200mm

Rock Dove  
600x1200mm



# Dove

AVAILABLE SIZES  
600x1200mm | 600x600mm

AVAILABLE FINISHES  
Matt, Rustic Punch

Rock Dove



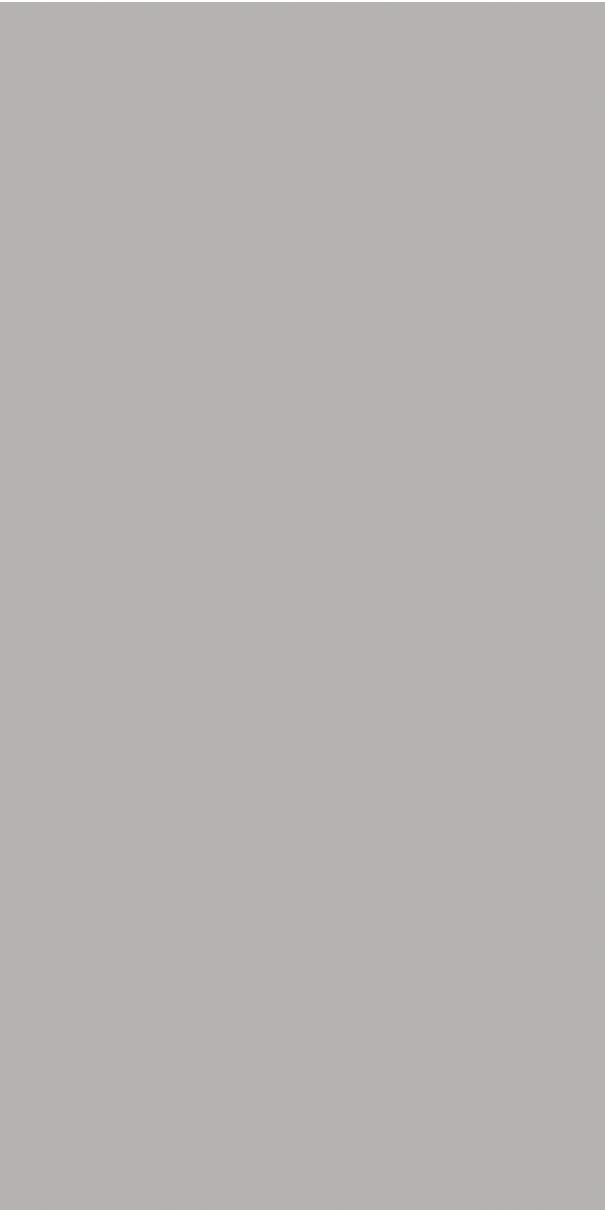
Rustic Punch 8mm

Dove



Matt 8mm

Dove



Matt 8mm

APPLICABLE ON  
WALL / FLOOR

  
Minimum  
4mm Spacer  
Recommended

---

Rock  
**Carbon Black**  
600x600mm



Carbon Black  
600x1200mm

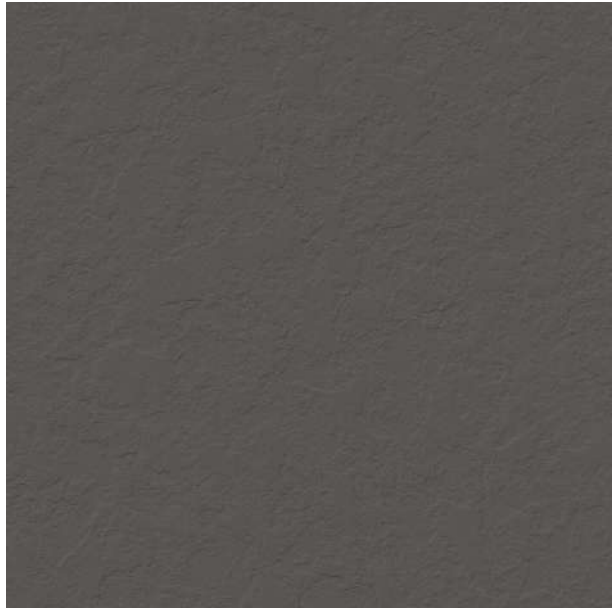


# Carbon Black

AVAILABLE SIZES  
600x1200mm | 600x600mm

AVAILABLE FINISHES  
Matt, Rustic Punch

Rock Carbon Black



Rustic Punch 8mm

Carbon Black




Matt 8mm

Carbon Black



Matt 8mm

APPLICABLE ON  
WALL / FLOOR

  
Minimum  
4mm Spacer  
Recommended



---

# Olive

600x1200mm

Rock Olive  
600x600mm

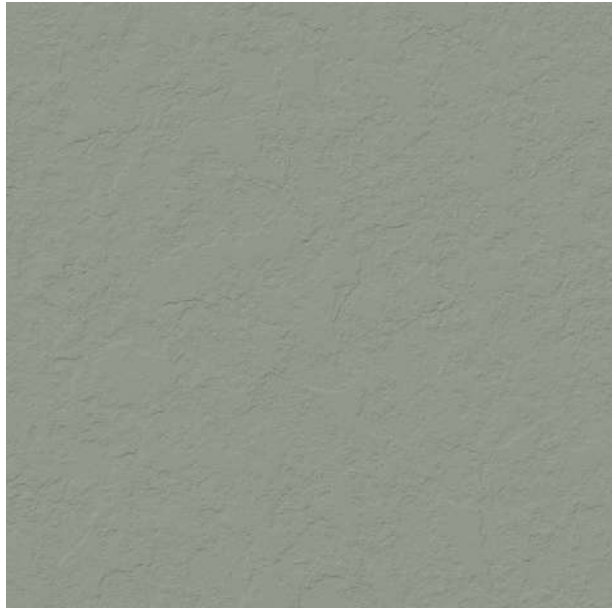


# Olive

AVAILABLE SIZES  
600x1200mm | 600x600mm

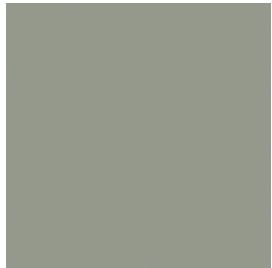
AVAILABLE FINISHES  
Matt, Rustic Punch

Rock Olive



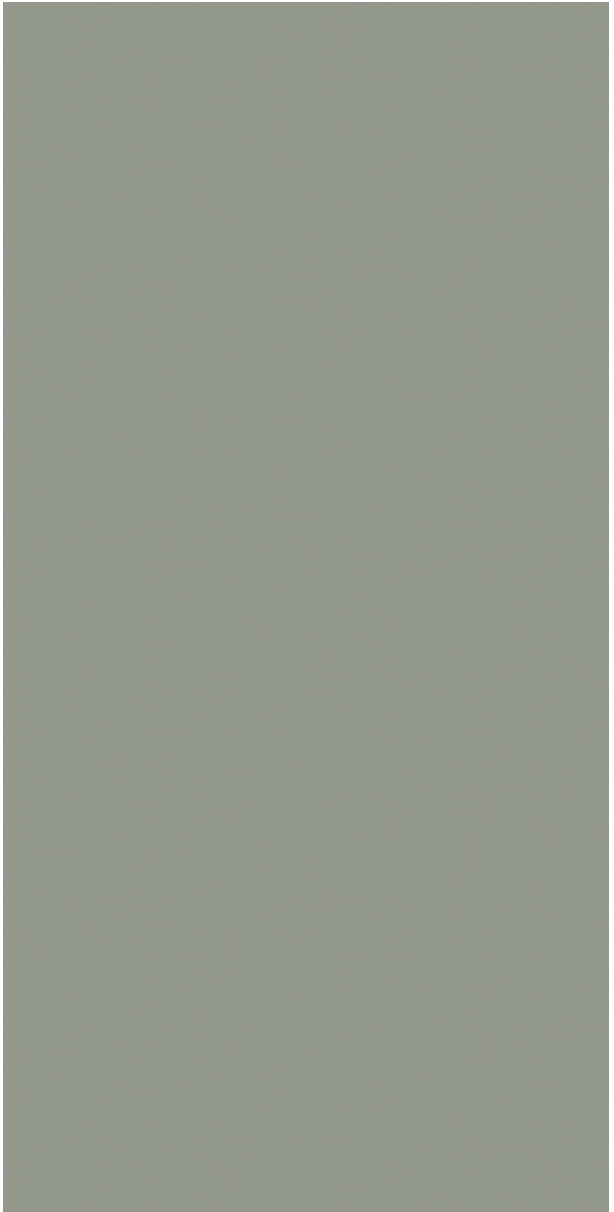
Rustic Punch 8mm

Olive



Matt 8mm

Olive



Matt 8mm

APPLICABLE ON  
WALL / FLOOR

  
Minimum  
4mm Spacer  
Recommended

## TECHNICAL SPECIFICATIONS

TECHNICAL DETAILS	STANDARD AS PER ISO-13006/EN176 GROUP BIa	MEAN VALUE OF FULL BODY VITRIFIED TILES	METHOD OF TEST
Deviation In Length & Width	± 0.60%	± 0.10%	ISO-10545-2
Deviation In Thickness	± 5.00%	± 2.00%	ISO-10545-2
Straightness Of Sides	± 0.50%	± 0.10%	ISO-10545-2
Rectangularity	± 0.60%	± 0.10%	ISO-10545-2
Surface Flatness	± 0.50%	± 0.10%	ISO-10545-2
Glossiness	Gloss Meter	Min. 90%	Glossometer
Water Absorption	≤ 0.50%	E ≤ 0.05%	ISO-10545-3
Breaking Strength	1300 N	2000 N	ISO-10545-4
Abrasion Resistance	Max. 175mm	Max. 145mm <sup>3</sup>	ISO-10545-6
Mohs Hardness	Min. 6	≤ 6*	EN101
Frost Resistance	Frost Proof	Frost Proof	ISO-10545-12
Thermal Shock	No Damage	No Damage	ISO-10545-9
Moisture Expansion	Nil	Nil	ISO-10545-10
Thermal Expansion	< 9 x 10 <sup>-6</sup>	< 6 x 10 <sup>-6</sup>	ISO-10545-8
Resistance of House Hold Chemical	No Damage	No Damage*	ISO-10545-13
Stain Resistance	Resistance	Resistance*	ISO-10545-14
Slip Resistance (Friction Co-efficient)	> 0.40	> 0.40	ISO-10545-17

## PACKING DETAILS

SIZES	THICKNESS	PIECES / BOX	WEIGHT / BOX (Approx)	COVERAGE AREA / BOX
600x1200mm	8 mm	2 Pieces	27.00 kg	15.5 ft <sup>2</sup> or 1.44 mtr <sup>2</sup>
600x600mm	8 mm	4 Pieces	25.50 kg	15.5 ft <sup>2</sup> or 1.44 mtr <sup>2</sup>
600x600mm	12 mm	3 Pieces	28.00 kg	11.63 ft <sup>2</sup> or 1.00 mtr <sup>2</sup>

